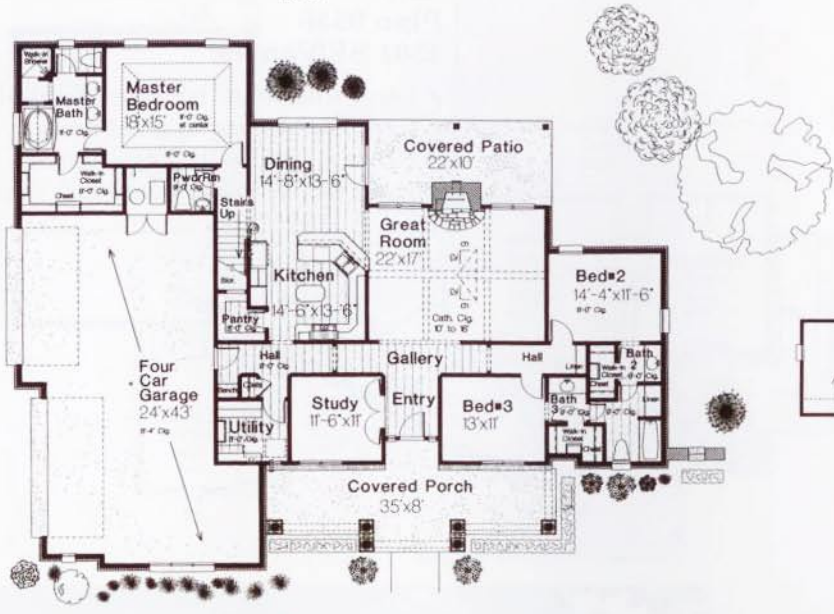


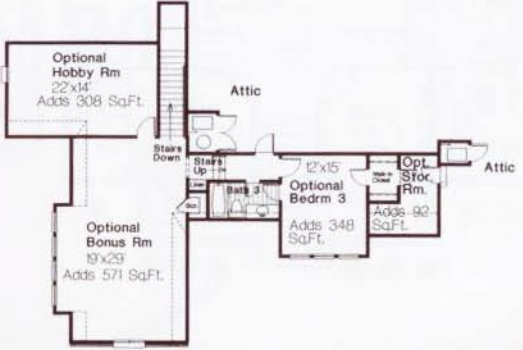
80'-0"

65'-0"



Plan F1818
2442 SF Veneer (1st Floor Only)

- ✓ Cathedral ceiling in great room
- ✓ 1200 SF future area upstairs
- ✓ Doorless walk-in shower
- ✓ Study
- ✓ Large covered front porch and stone gable exterior



© COPYRIGHT, FILLMORE DESIGN GROUP



Residential Designers
 6901 N. Robinson Ave.
 405-843-5456 Oklahoma City 73116

FILLMORE DESIGN GROUP

Plan No. F1818
 2442 SF Veneer
 (1st Floor Only)